

SOFT ROCK lounge & soft furniture



FEATURES

- Modular lounge system with endless possibilities to create unique and inspiring spaces;
- Easy to assemble and disassemble;
- Integrated power sockets or USB (Type A+C, max 5A) modules enables charging of mobile phones, tablets or laptops;
- Cable management solutions ETL Listed to UL 962A for North America and SEV 1011 for Switzerland;
- Dividing screens sound absorption class C (only when upholstered with fabric, not RNN).

QUALITY STANDARD

- LST EN 16139:2013 (level 2)
- LST EN 16139:2013/AC:2013 (level 2)
- EN 1023-1:1998
- EN 1023-2:2000
- EN 1023-3:2000
- LST EN ISO 354:2004
- LST EN ISO 11654:1998

TECHNICAL INFORMATION

Type

- Lounge chairs and modular system.

Lounge seaters

- Black plastic feet with plastic glides (PP), height 63 mm, 4 pcs (felted glides adds extra 3 mm);
- Internal frames made from 15 mm chipboard;
- Curved internal frames made from 15 mm chipboard and 15 mm bent plywood;
- Backrest fixed to the internal frame with powder coated metal tubes 40x30 mm;
- Bottom plate made from 25 mm MFC (melamine) with 2 mm ABS edging;
- Bottom plate fixed to the internal frame with powder coated connectors from metal tube 60x60 mm;
- Bottom plates have ability to install linking brackets, which allows linkage of the seaters into modular combinations;
- Maximum functional load 110 kg;
- Preassembled connectors (metal) for side armrests or screens for quick mounting;
- Seats made from molded polyurethane foam (density: 55 kg/m³);
- Backrests made from molded polyurethane foam (density: 55 kg/m³);
- Sides and backs softened with foam VB3842 (density: 36-39 kg/m³);
- Upholstered with fabric or RNN, without gluing.

Side armrests

- Internal frame made from 12 mm, 25 mm chipboard, 3 mm HDF and 3 mm flexible plywood;
- Preassembled connectors (plastic) for quick mounting to lounge seaters;
- Covered with foam VB3842 (density: 36-39 kg/m³);
- 1 AC power socket 100 – 230 V (EU, UK, FR, CH, US) or USB fast charger (USB Type A+C, max 5A), cable ends with connector GST18i3 male, length – 0,3 m;
- Upholstered with fabric or RNN.

Armrests with metal base

- Internal frame made from 12 mm chipboard and 3 mm HDF;
- Covered with foam VB3842 (36-39 kg/m³);
- 1 AC power socket 100 – 230 V (EU, UK, FR, CH, US) or USB fast charger (USB Type A+C, max 5A), cable ends with connector GST18i3 male, length – 0,6 m;
- Bottom base, for positioning between seaters, made from 3 mm metal sheet, black powder coated;
- Upholstered with fabric or RNN.

Screens

- Made from 16 mm chipboard;
- Covered with 10 mm acoustic foam;
- Preassembled connectors for quick mounting to lounge seaters;
- Upholstered with fabric or RNN.

Screen table

- Made from 18 mm birch plywood, covered in veneer with sloping edges;
- All edges are rounded: R1 mm;
- Mounting brackets made from 4 mm metal sheet, black powder coated;
- Mounted 700 mm from the ground (300 mm from the seat);
- Bolts covered with black plastic (PE) caps.

Linking brackets for lounge seaters

- Brackets are made from black powder coated metal tube 50x15 mm.

CABLE MANAGEMENT

Power supply cables

- AC plug – GST18i3 female connector;
- AC plug standards: EU, UK, FR, CH, US;
- Cable lengths: 1 m and 3 m;
- Cable core: 1,5mm² (EU, FR, UK, CH);
- Inline Overcurrent Protection (OCP 10A) (CH);
- Inline Overcurrent Protection fulfills statutory requirements: in the USA for more than 3 sockets, in Switzerland for more than 1 socket;
- Black color.

Extension cables

- GST18i3 female connector – GST18i3 male connector;
- Cable lengths: 1 m, 2 m and 3 m;
- Cable core: 1,5 mm² (EU, FR, UK, CH);
- Black color.

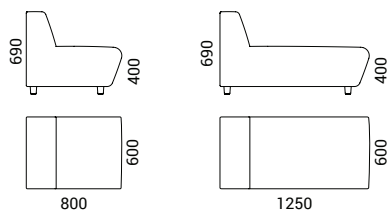
Distributor blocks

- GST18i3 1-2 block (1 IN (male), 2 OUT (female)), black color;
- GST18i3 1-3 block (1 IN (male), 3 OUT (female)), black color;
- GST18i3 1-5 block (1 IN (male), 5 OUT (female)), black color.



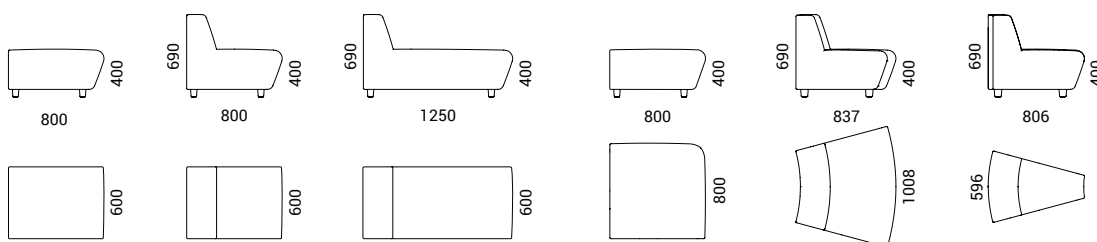
RANGE

Lounge chairs

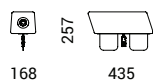


Modular system

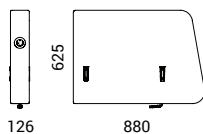
Seaters



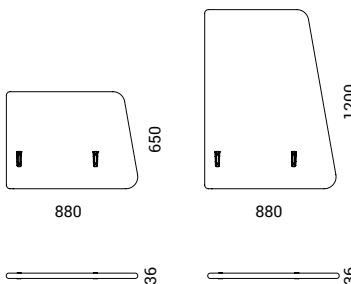
Armrest



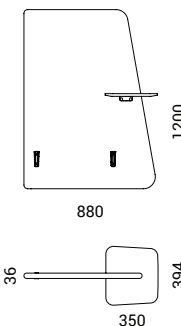
Side armrest



Screens



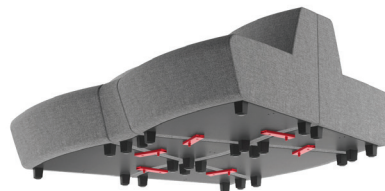
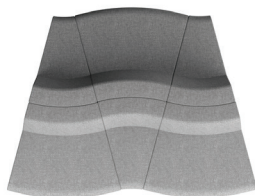
Screen with a coffee table



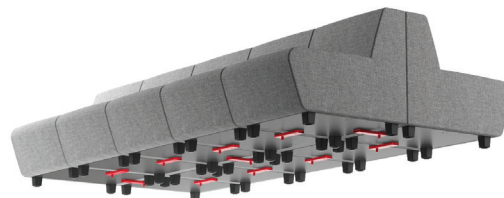
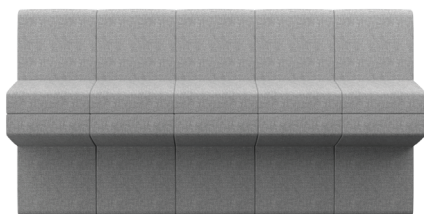
ADDITIONAL INFORMATION

Ordering linking brackets for lounge seaters

- Linking brackets can be used to connect lounge seaters through sides or back;
- Current combination, below, consists of: SRS102-000 – 3 pcs., SRS103-000 – 3 pcs., SRS000 – 6 pcs.:



- For modularity, like this below, is enough to connect every second or every third back with SRS000: SRS002-000 – 10 pcs., SRS000 - 11 pcs.



Preassembled connectors on lounge seaters

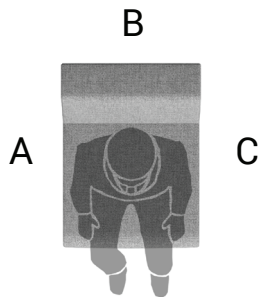
- Depending on modularity, lounge seaters can be ordered with factory preassembled connectors for fast final assembly;

Metal connector preassembled on lounge seaters

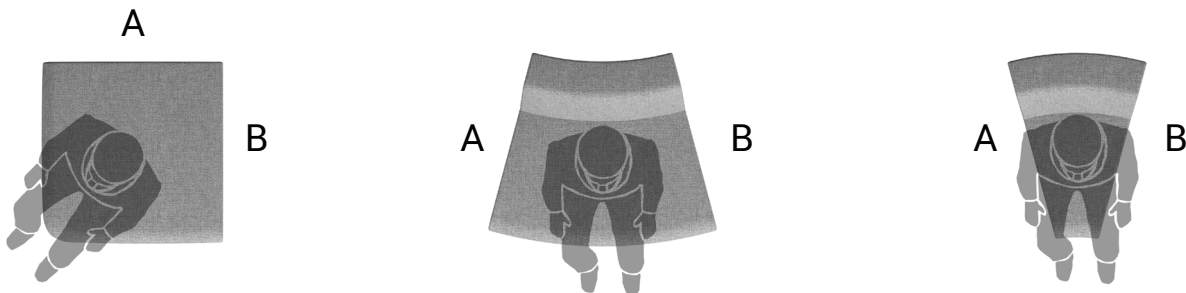


Plastic connectors preassembled on screens or side armrests

- Seaters SRS001, SRS002 and SRS003 can have factory preassembled metal connectors for 3 sides: R/H (A), back (B) and L/H (C);



- Seaters SRS101, SRS102 and SRS103 can have factory preassembled metal connectors for 2 sides: R/H (A) and L/H (B);



Screens or side armrests connections

- Center versions of side armrests or screens have preassembled connectors on both sides and two separate seaters combines into one. **In this case SRS000 cannot be used;**
- Current combination consists of: SRS002-001 – 2 pcs., SRS002-100 – 2 pcs., SRS203 – 2 pcs., SRS000 - 2 pcs.



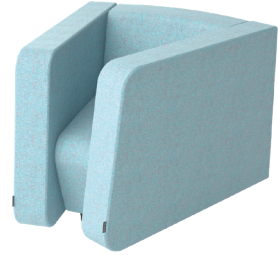
NOT RECOMMENDED COMBINATIONS



- SRS103 stand alone;



- SRS103 stand alone with armrest (-s) or screen (-s);



- SRS103 in the middle between SRS003;



- SRS001 stand alone with armrest or screen from one side;



- Armrests SRS301, SRS302, SRS303 or SRS304 have metal base and can only be placed between two seaters.

